

# Product of the Month

## PERSONAL EMERGENCY ALERT

Palmerton Telephone Company's Personal Emergency Alert provides continuous 24-hour a day emergency response service. Personal Emergency Alert is a great way of keep aging and at-risk loved ones where they want to be - in their homes.

It is available to anyone within the Palmerton Telephone serving area AND to nearby communities, including Walnutport, Slatington, Lehighton, Parryville, Weissport, Kresgeville, Saylorsburg and Effort.

- It's peace of mind for as little as \$17.95 a month!
- Our trained technicians install the alarm unit.
- A waterproof alarm sender, either in the form of a wristwatch or pendant summons help at the press of a button.
- Local Operators are able to talk and hear the caller through a special console. After determining what help is needed, they will notify up to four predetermined contacts, including 911. These can be family, friends, emergency personnel or caregivers.
- The equipment has power failure and restore options and an inactivity alarm.

Order by April 30, 2024 and receive **FREE INSTALLATION**.

Call us today to order at 610-826-6650.



## Brain Teaser

**Palmerton Telephone is giving away a \$25 Gift Card to Claude's Creamery in Palmerton, PA.**

To enter, e-mail the correct answer to [jbrixius@brctv.com](mailto:jbrixius@brctv.com) or send a 3"x5" index card titled "April Brain Teaser" to **613 Third Street, Palmerton, PA 18071**. Please include your name, address, daytime telephone number (to call only if you win), and the Brain Teaser answer. All entries must be received by **9/20/23**.

**Good Luck!**

**My life is often a volume of grief, your help is needed to turn a new leaf. Stiff is my spine and my body is pale, but I'm always ready to tell a tale. What am I?**

## Brain Teaser | February 2024 Winner

Congratulations to **Matt Hoffman**, of Effort, PA. **Matt** was the winner of a \$25 Gift Card to Claude's Creamery in Palmerton, PA.

**Question:** Take one out and scratch my head, I am now black but once was red. What am I?

**Answer:** A match

printed by [www.tnprinting.com](http://www.tnprinting.com)

**Customer Service:** 610-826-6650 • **Business Office:** 610-826-2115 • **Repair Service:** 610-826-3444 • **Gilbert Office:** 610-826-9321

**465 Delaware Avenue • Palmerton, PA 18071 • [www.ptelco.com](http://www.ptelco.com)**



## From the Manager's Desk

Dear Valued Customer,

It's clear the need for faster internet speeds and bandwidth will continue to increase as households connect more devices to work, learn, and play at home.

We believe that as our lives and experiences evolve, even in unpredictable ways, Fiber-to-the-Home (FTTH) is the most technologically flexible and reliable solution – one that is truly long-term. That's why we're committed to rebuilding our entire internet service network to provide a new state-of-the-art 100% fiber-optic solution that delivers FTTH directly to our customers.

We here at Palmerton Telephone Company are excited to announce that construction has begun in the Borough of Palmerton. Palmerton Telephone Company will introduce Fiber-to-the-Home area by area over the next few years. Once complete, we will begin offering PTC Fiber, which will deliver ultra-fast, symmetrical speeds, along with greater reliability to the neighborhoods we serve. Palmerton phone service will also be provided through the PTC Fiber.

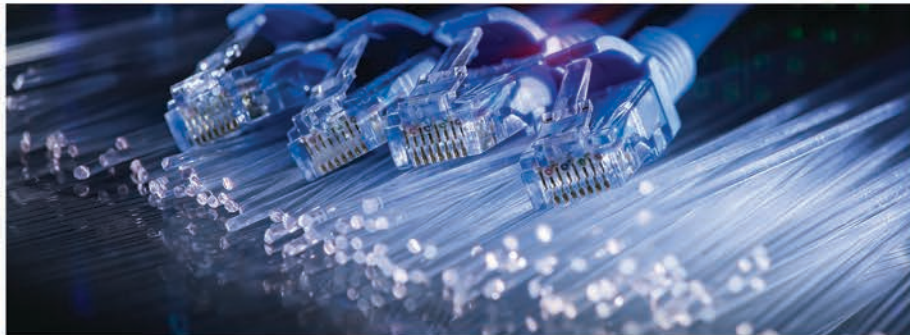
We love serving your community and have always strived to provide our customers with the best technology available. With this investment, we are creating the most advanced network possible for now and well into the future. Please stay tuned for more Fiber-To-The-Home announcements and updates.

Thank you for choosing Palmerton Telephone Company. We are here for you. If you need any assistance or have any questions, please give us a call at 610-826-6650, visit our website at [www.ptelco.com](http://www.ptelco.com) or stop in.

Best Regards,

**Tim Hausman**

General Manager, Palmerton Telephone Company



## Community Calendar

If you'd like to see what's happening to benefit the non-profit groups in our area, visit our Community Events Calendar at [www.ptelco.com](http://www.ptelco.com). Just select 'Menu', then 'Community Calendar'.



## Phone Feature of the Month:

### SELECTIVE CALL REJECT

Allows the user to automatically reject calls from directory numbers (DNs) on the customer's predesignated screening list.

When a call is placed to the customer's number from a number on the screening list, the caller receives an announcement indicating that the party he or she is trying to reach does not wish to receive calls at this time.

To use this service dial \*60 (Tone) or 1160 (Rotary).  
To discontinue use dial \*80 (Tone) or 1180 (Rotary).

Selective Call Reject is \$5.00 per month.

For more information, call us at (610) 826-6650.

